

DEEPWATER ATLAS

ULTRA-DEEPWATER DUAL-ACTIVITY DRILLSHIP



For additional information please contact:

Transocean
Marketing Department
1414 Enclave Parkway
Houston, TX 77077, USA
Phone: + 1-713-232-7500
Fax: + 1-713-232-7880
marketing@deepwater.com
www.deepwater.com

General Description

Design / Generation	Jurong Espadon JE3T Ultra Deepwater Drillship
Constructing Shipyard	Jurong Shipyard, Pte Ltd, Singapore
Year Entered Service / Significant Upgrades	2022
Classification	DNV +1A1, Ship Shaped Drilling Unit, E0, DYNPOS AUTRO, DRILL, CRANE, HELDK, BIS, MPD
Flag	Marshall Islands
Dimensions	816.6 ft. (249 m) x 139.4 ft. (42.5 m) x 64 ft. (19.5 m) depth
Drafts	Operating 33.5 ft. (10.8 m) / Transit 26.3 ft. (8 m)
Accommodation	220 persons
Displacement	90,131 st. (81,766 mt) Operating
Variable Deck	24,250 st. (22,000 mt) operating / 17,637 st. (16,000 mt) transit
Transit Speed	12 knots
Maximum Water Depth	12,000 ft. (3,658 m) designed / 10,000 ft. (3,048 m) outfitted
Maximum Drilling Depth	40,000 ft. (12,192 m)

Drilling Equipment

Derrick	Dual Dynamic Bottle Neck Type (DDBN-1750/1250). 168.86 ft. (51.5 m) clear lifting height x 80ft (24.4m) x 60 ft. (18.3 m). Designed to API-4F, SSL E2/U2
Gross Hook Loads	(Main) 1,700 st. (1,542 mt) capacity (Aux) 1,250 st. (1,134 mt) capacity
Drawworks	(Main) NOV AHD-1700-10500 hp (Aux) NOV AHD-1250-9000hp
Compensator	(Main) NOV CMC-E-1500/3300-7x78, rated 1650 st. (1,497 mt) locked, 750 st. (680 mt) compensating, 25 ft (7.62 m) stroke
Rotary Table	(Main & Aux) NOV RST-755 75-1/2" hydraulic rated at 1,500 st. (1,360 mt) (main), 1,250 st. (1,134 mt) (aux); both 45,000 ft.-lbs. maximum continuous torque
Top Drive	NOV TDX-1500 1,500 st. (1,360 mt) (main), NOV TDX-1250 1,250 st. (1,134 mt) (aux) Maximum Speed 275 rpm, continuous torque 105,000 ft.-lbs at 130rpm
Tubular Handling	Two (2) NOV ARN-270-(TW-3/60) Iron Roughnecks for tubulars ranging from 3-1/2" to 10". Racking systems for tubular range of 3-1/2" to 22" with two (2) vertical NOV/HR-IV-ER Hydraracker pipe racking systems One (1) NOV Pipe Catwalk Shuttle, CWS-P20-90HS-90-HS. Maximum capacity 22 st. (20 mt), 93 ft. (28.3 m) tubular at 36" Diameter
Riser Feed	One (1) NOV Riser Catwalk Machine, CWM-R45-90-HS Maximum capacity 49 st. (45 mt). (2) Riser Cranes and a Riser Lift.
Mud Pumps	Five (5) NOV 14-P-220 AC triplex pumps, 7,500 psi, each driven by two (2) x GE 1,150hp 690VAC motors plus space for a fifth optional pump
HP Mud System	Rated 7,500 psi
Solids Control	Six (6) Brandt Single VSM-MS triple deck shale shakers

Cranes

Cranes	Three (3) 110 st. (100 mt) knuckle boom cranes at 62 ft (19 m) radius, rated at 27 st. (25 mt) at a radius of 147. (45 m)
Subsea Crane	One (1) 181st (165mt) active heave compensated knuckle boom crane for handling subsea equipment to 9,842 ft. (3,000 m) WD
Stern Crane	One (1) 44 st. (40 mt) crane for thruster motor removal and flare boom handling

Revision Date: 08 April 2023

Power & Machinery

Main Power	6ea Wartsila 16V32E 4-stroke, 720 rpm, 7680 kW each total 46,080 kW, each driving a 7200 kW, 11kV generator each, total 43,200 kW
Emergency Power	One (1) 4-stroke, 1,800rpm Cummins CSMXTA60OLGS diesel engine rated at 1,900 kW driving a 690 VAC 1,700kW, 2125kVA generator. One (1) Schneider emergency power switchboard
Power Distribution	Three (3) Siemens 11KV AC switchboards with (AGP)® (Advanced Generator Protection). Three (3) Siemens 690VAC Drilling VFD Switchboards. Six (6) Schneider 690VAC Low Voltage Switchboards (3 Forward, 3 Aft)

Storage Capacities

Fuel Oil	53,069 bbl. (8,437 m3)
Liquid Mud	(active + reserve + slug) 20,548 bbl. (3,267 m3)
Base Oil	6,289 bbl. (1,000 m3)
Brine	11,132 bbl. (1,770 m3)
Drill Water	23,989 bbl. (3,814 m3)
Potable Water	12,975 bbl. (2,062 m3)
Bulk Material	(mud + cement) 38,140 cu. ft. (1,080 m3)
Sack Storage	10,000 sacks

BOP & Subsea Equipment

BOP	Two (2) x seven (7) ram 18-3/4" x 15,000 psi NOV BOP's consisting of two (2) triples and one (1) single (at delivery). *1 x 15K BOP & 1 x 20K BOP (in 2023). Separate test control system for the second BOP while the primary BOP is deployed.
LMRP	Two (2) LMRP's, each including one (1) NOV/Schaffer 18-3/4" 10,000 psi Schaffer dual spherical preventer.
BOP Handling	NOV BOP Moonpool Trolley rated at 716 st. (650mt). BOP Gantry Crane with two (2) x 330st (300mt) main hoist and two (2) 38 st. (35 mt) auxiliary hoists
Marine Riser	NOV FT-HC 21" OD Flanged. With 4 1/2" ID K/C lines, 4" ID booster line and 2ea conduit lines
Tensioners	4,000 kips combined capacity using eight (8) NOV WRT-250-D50PL dual riser tensioners rated at 250 kips each, 50 ft. (15.24 m) Stroke
Diverter	NOV/Shaffer / 21-500-75-EXT, 21" x 500 psi with one (1) 16" Overboard Valve feeding a 16" Flow selector with two (2) 16" overboard line.
Tree Handling	One (1) 1,102 st. (1,000mt) Combined Xmas Tree Trolley and Riser Trip Handling Cart. Two (2) 165 st. (150mt) skid cart with 4-way skidding
BOP Controls	NOV Multiplex control system, with deadman system, auto-shear, acoustic back-up system and ROV Intervention.
Moonpool	91.86 ft. (28 m) length x 35.43 ft. (10.8 m) width

Station Keeping / Propulsion System

Thrusters	Six (6) Rolls Royce UUC 455 FP variable speed, demountable azimuthing thrusters, 5,500 kw. Each, with advanced thruster capabilities (ADCAP)
DP System	DPS-3 rated for water depth up to 12,000 ft. (3,658 m) with backup DP system. Kongsberg DP-32, DP-12 & C-Joy System

Other Information

Additional Features MPD Ready - Upgraded

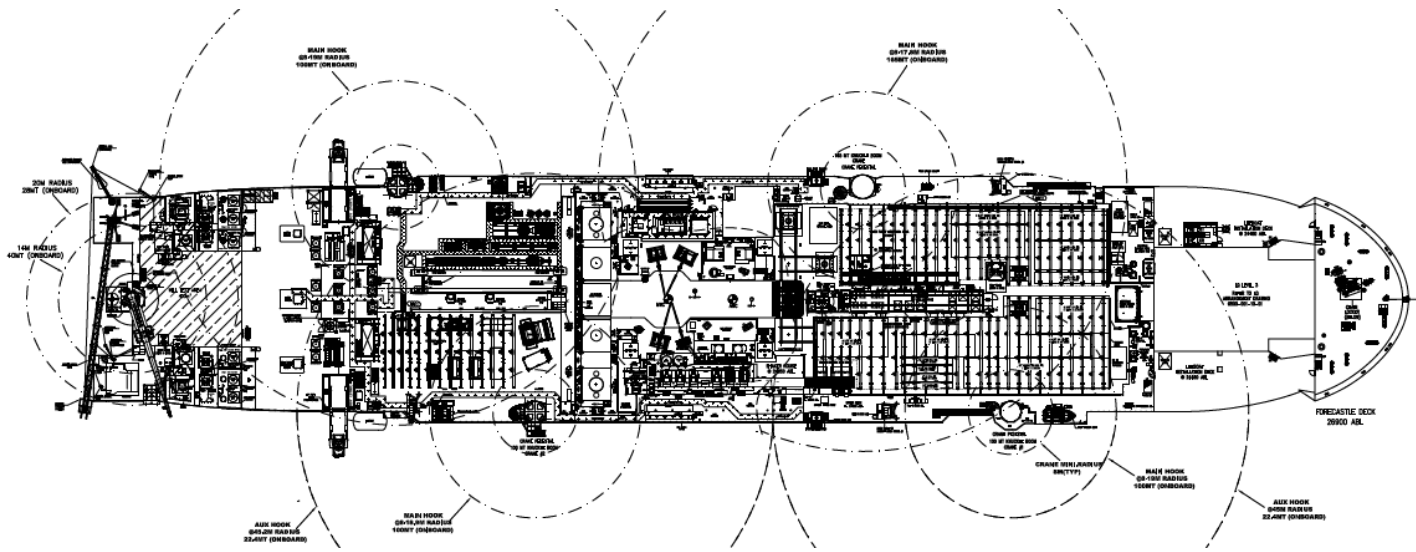
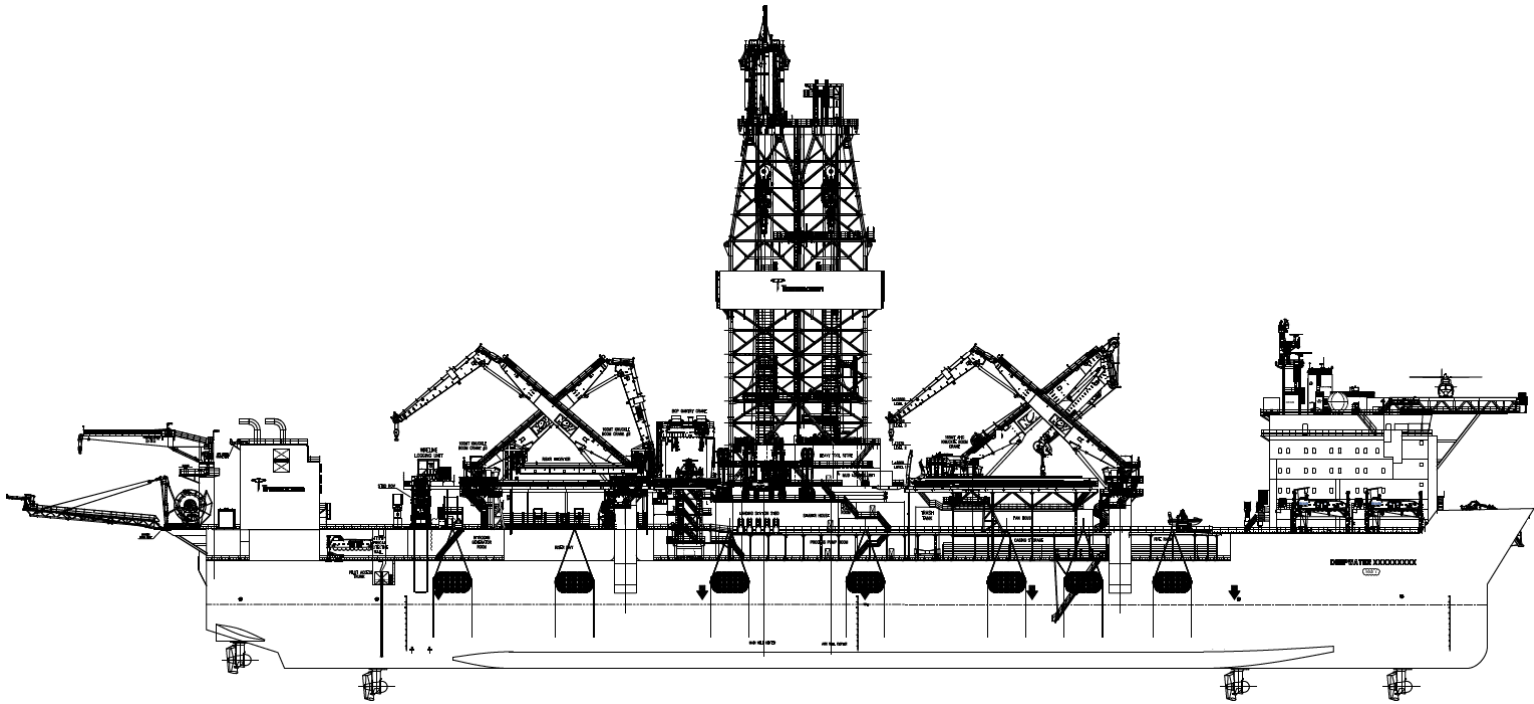


These specifications are intended for general reference purposes only, as actual equipment and specifications may vary based upon subsequent changes, the contract situation and customer needs. All equipment shall be operated and maintained at all times, in compliance with Transocean standard operating manuals, policies and procedures, and within its stated operational limits or continuous rated capacity, in order to assure maximum operational efficiency.

Patent Notice: This rig, its systems, components, and/or equipment in use on this rig, may be protected by one or more US and/or foreign patents. See <http://www.deepwater.com/patents> for details.

DEEPWATER ATLAS

ULTRA-DEEPWATER DUAL-ACTIVITY DRILLSHIP



BOUNDLESS

**SERVICE FOCUSED
DATA DRIVEN
PERFORMANCE ORIENTED**

Revision Date: 08 April 2023



These specifications are intended for general reference purposes only, as actual equipment and specifications may vary based upon subsequent changes, the contract situation and customer needs. All equipment shall be operated and maintained at all times, in compliance with Transocean standard operating manuals, policies and procedures, and within its stated operational limits or continuous rated capacity, in order to assure maximum operational efficiency.

Patent Notice: This rig, its systems, components, and/or equipment in use on this rig, may be protected by one or more US and/or foreign patents. See <http://www.deepwater.com/patents> for details.